



## PROJECT CARGO OPERATIONS

May 2022

[www.grindrod.com](http://www.grindrod.com)





Click below for  
more detail on our services

[PORT](#)

[TERMINALS](#)

[STEVEDORING](#)

[INTERMODAL](#)

[SEAFREIGHT](#)

[CROSS BORDER AND PROJECT LOGISTICS](#)

[RAIL](#)

[SHIPS AGENCY](#)

[CLEARING AND FORWARDING](#)

[MARINE TECHNICAL SERVICES](#)

PROJECT CARGO CLIENTS



## PROJECT CARGO SHIPMENTS

Client: Grindrod Rail

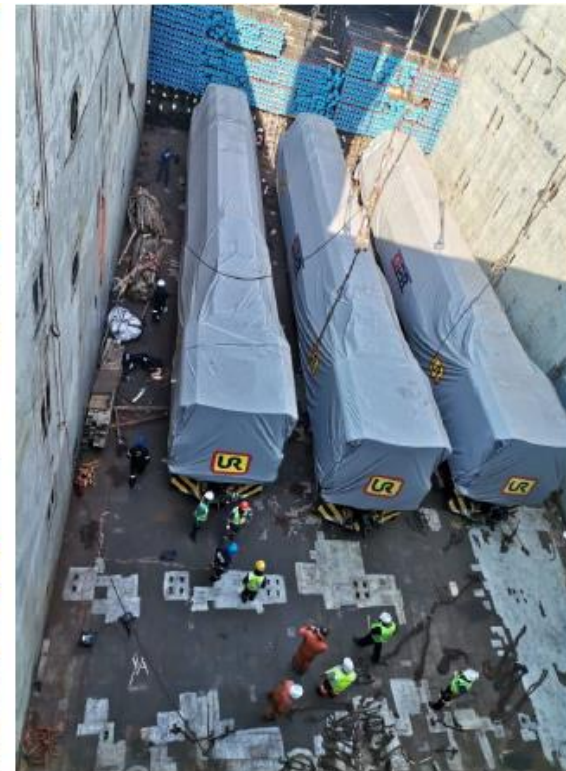
Date June 2021

### LOCOMOTIVES

Shipment of 4 series 12 locomotives from Johannesburg via Richards Bay to Mombasa Kenya

We were responsible for the transportation from Johannesburg, the chartering of the vessel and all of the documentation.

106mt per locomotive





## PROJECT CARGO SHIPMENTS

Client WBHO/Total/CCS

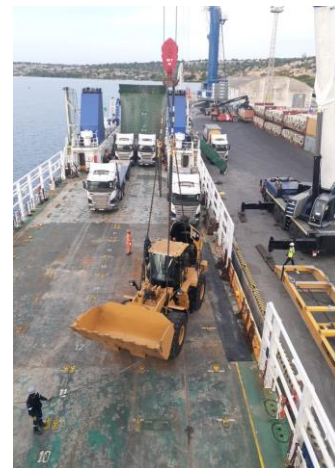
Date 2020 and 2021

### **Project cargo from Durban/Pemba/Nacala to Palma Mozambique**

During the course of the two years Grindrod were responsible for the transport, shipping, chartering and stevedoring for multiple yellow equipment, cranes and construction equipment for the LNG Project

This included the use of our 150mt crane at Nacala, our fleet of trucks, a number of ship to ship transfers , the use of low bed trailers and the chartering of 6 LCT and 2 MPV's

A total of 114 voyages were carried out over this period



## PROJECT CARGO SHIPMENTS

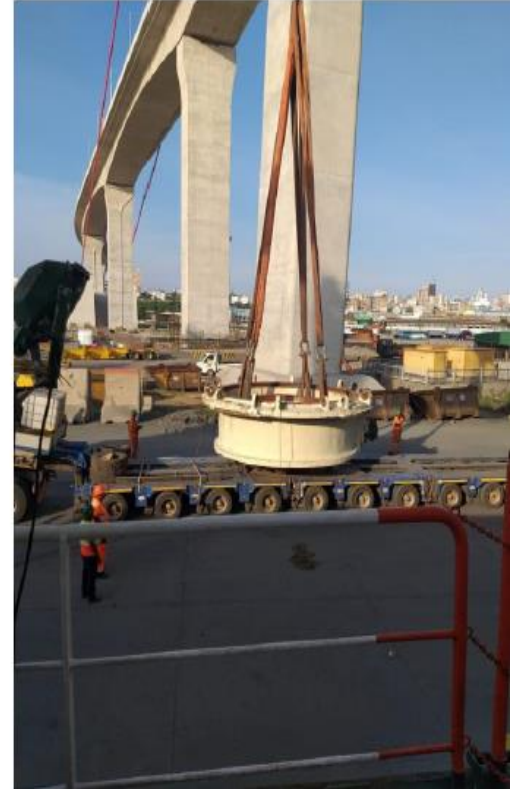
Client NMT Global Project Logistics  
Date 2017 to 2019

### Cobre Mine Project Panama

DRC & Zambia via Durban and Maputo to Houston

Heavy mining equipment sourced in DRC and Zambia, transported to Durban or Maputo for loading. Arrange trucking from site and customs clearance at numerous border controls (DRC, Zambia, Zimbabwe, South Africa, Swaziland and Mozambique), in time to meet vessels

11 vessels utilised over 2 years



## PROJECT CARGO SHIPMENTS

---

Client Breakthrough Solutions (Pty) Ltd

Date 2018

### Baggage Conveyor System

Durban Port to Eswatini Airport

Scissor lift, tug master, baggage handler, generators and fuel bowser

Heaviest piece 40mt. The challenge here was the different shapes of the pieces





# GRINDROD LOGISTICS AFRICA

## PROJECT CARGO SHIPMENTS

---

Durban Maydon Wharf Facilities

154474m<sup>2</sup>



Maputo MICTL Terminal

85000m<sup>2</sup>





## GRINDROD LOGISTICS MOZAMBIQUE

---

INVESTMENT OF

**US\$ 23 000 000**

---

Developed a 61 000m<sup>2</sup> facility in close proximity to the Nacala Port.

WAREHOUSE OF

**10 000 m<sup>2</sup>**

CONTAINER YARD FOR

**3 500 TEU's**

LONG-HAUL TRUCKS

**50**



[www.grindrod.com](http://www.grindrod.com)

THANK  
YOU



LOGISTICS + PORTS + RAIL + TERMINALS

A COMPLETE SUPPLY CHAIN SOLUTION