

**Hansa Meyer Shipway**

...a member of the *Hansa Meyer* - group



**Chile**

***Regional Presence at***

***Argentina – Bolivia – Paraguay - Uruguay***

***International Project Forwarder***

***Especialized in Logistics for Industrial Projects***

***Experienced people ...***

# Regional & Global Presence

## America

**Argentina**

Brasil

**Bolivia**

Canada

**Chile**

El Salvador

Guatemala

Mexico

Panama

Peru

**Uruguay**

**USA**

Venezuela

## Europe

Austria  
Belgium  
Croatia  
Denmark  
Holand  
Hungary  
Finland  
Francia  
**Germany**  
Italy

Norway  
Poland  
Portugal  
Romania  
Russia  
Singapore  
**Spain**  
Sweden  
Switzerland  
United Kingdom

## Middle East

Iran  
Jordan  
Kuwait  
Qatar  
Saudi Arabia  
Syria  
**UAE**  
Turkey

## Africa

**Egipt**  
Ethiopia  
Moroco  
Oman  
Tunes

## Oceania

Australia

## Asia

Bangladesh  
Cambodia  
**China**  
Filipinas  
India  
Indonesia  
Japón  
Korea  
Malasia  
Pakistan  
Russia  
Sri Lanka  
Taiwan  
Vietnam

# Hansa Meyer Shipway

*Executed Projects in...*

***CHILE...***





# Energy - Electric Rooms...



**ORIGIN:** Santiago - Chile

**DESTINATION:** Talabre – Copiapó . Chile

**PROJECT TYPE:** Energy

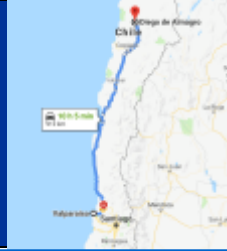
**SERVICE:** National Transportation of 2 x 80 tn Electric Rooms – L x W x H = 22,00 x 5,50 x 4,50 m

HMGS was hired to transport these Electric Rooms from Santiago City (down town) up to Talabre in Chile. Road Survey were performed in order to make it possible due to the sizes and weight of the rooms. Transportation was duly performed without inconvenient.





# Energy - Energy Suport



**ORIGIN:** Valparaíso / San Antonio Ports - Chile

**DESTINATION:** Talca / Vallenar / El Peñón / Lamari / Choapa - Chile

**PROJECT TYPE:** Energy

**SERVICE:** National Transportation of General Cargo in containers to site

Jointly with Suardiaz Logistic Spain, HMGS provide local services in Chile, for the cargo reception at all Chilean ports as well as at the Santiago de Chile (SCL) Airport, coordination for Custom Clearances and local transport up to site for TSK projects. Cargo has different origins worldwide (Spain, China, Turkey, etc.) so that different treatments.







# Energy - Transformers...



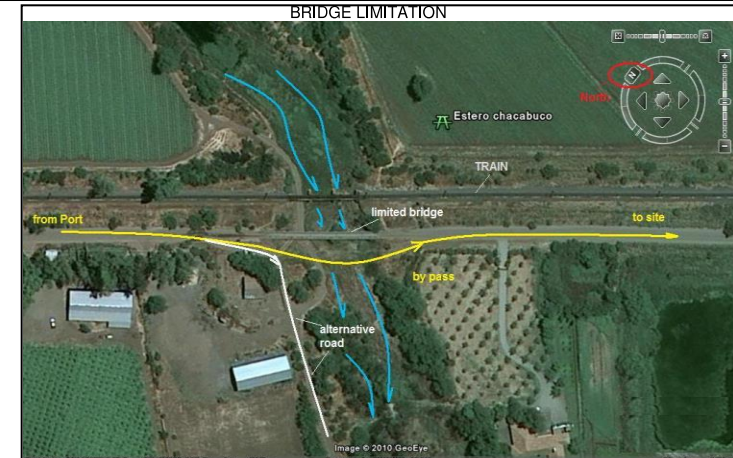
**ORIGIN:** Gothenburg - Sweden

**DESTINATION:** Valparaiso -> Polpaico - Chile

**PROJECT TYPE:** Energy

**SERVICE:** International Transportation of 120 tn Transformer.

HMGS was hired to transport this transformer from Gothenburg up to Polpaico in Chile. As there was no road available to reach the site and the only one bridge with an important limitations (just 20 tn) a by-pass over the Chacabuco stream was built.





# Energy - Hydro Power Plant “Chacayes”

**ANDRITZ**  
**Hydro**

**ORIGIN:** Austria - Spain

**DESTINATION:** Valparaiso + San Antonio -> Angostura - Chile

**PROJECT TYPE – NAME :** Hydro Energy – “CHACAYES ”

**SERVICE:** International Transportation of 4350 FRT (max 155 tn)

HMGS was hired to transport the main pieces of this project, Turbines, Stators and Transformers for this Hydro Power Plant. Road Surveys, Bridges Calculation, vessel's hiring, cargoes re-packaging, were some of the required services.





# Energy - Hydro Power Plant “Chacayes”

**CLIENT :**



**ORIGIN:** Santos - Brazil

**DESTINATION:** Valparaiso + San Antonio -> Angostura - Chile

**PROJECT TYPE – NAME :** Hydro Energy – “CHACAYES ”

**SERVICE:** International Transportation of 2 x 80 tn Transformers - Toshiba

HMGS was hired to transport 2 x 80 tn Transformers from Santos in Brazil up to site in Chacayes.

A complete study of the Chacayes bridge was requested, since the weight of the transformers were in the limit of its strength. After that HMGS defined the modules to be used for these transportations.







# Energy - Transformers...



**ORIGIN:** Brazil

**DESTINATION:** San Antonio -> La Higuera - Chile

**PROJECT TYPE – NAME :** HYDRO Energy – “LA HIGUERA”

**SERVICE:** International Transportation of 2 x 108 tn Transformer.



HMGS was requested to transport 2 x 130 tn transformers from the North of Brazil up to “La Higuera” Hydro Power plant, site area. As the basis were not finished at the time of arrival, transformers were discharged to the site floor. A few weeks later HMGS went to pick them up and move them to its basis, up to their final point of resting.





# Machinery & Equipments – Fiber Optic



**ORIGIN:** Norway

**DESTINATION:** San Vicente -> Chiloé - Chile

**PROJECT TYPE – NAME :** Machinery & Equipmnet – “**FIBRA OPTICA AUSTRAL**”

**SERVICE:** International Transportation of 1 x 130 tn roll.



HMGS was hired to transport a 130 tn Fiber Optic roll from Norway up to Chile. The equipment was discharged at San Vicente port, and transported by land up to Pto. Montt port, then transshipped onto a Supply vessel for its final destination Chiloe Island.





# Machinery & Equipments – Cement Plant



**ORIGIN:** Germany

**DESTINATION:** San Vicente -> Concepción - Chile

**PROJECT TYPE – NAME :** CEMENT PLANT – “**BIO BIO**”

**SERVICE:** International Transportation of 2300 FRT (max 163 tn)

LOESCHE GERMANY requested us to transport main components of the Cement Bio Bio plant up-grade. Vessel's hiring, road surveys, bridges calculation were studied to reach final site. The cargo was safely discharged into the BIO BIO's facilities.







# Energy - Hydro Power Plant “Angostura”

## ANDRITZ Hydro

**ORIGIN:** Austria - China

**DESTINATION:** San Antonio - Valparaíso -> Angostura - Chie

**PROJECT TYPE – NAME :** Hydro Energy – “**ANGOSTURA I**”

**SERVICE:** International Transportation 8300 FRT (Max 187 tn)

HMGS was requested to organize the complete logistic for this project. Pieces were transported mainly from Austria and China up to Central Chilean ports, and then transported by land up to final site. It was completed in 152 shipments, big and small, part cargoes, complete chartered vessels and air shipments.







# Oil & Gas – Sensitive Equipment



**ORIGIN:** Antofagasta – San Antonio – Valparaíso Pt + SCL Airport

**DESTINATION:** Antofagasta + Valparaíso -> Mejillones - Chile

**PROJECT TYPE:** Energy

**SERVICE:** Local Services in Chile – abt 3.000 FRT (Max 120 tn)

HMGS provide local services in Chile, for the cargo reception at all Chilean ports as well as at the SCL Airport, coordination for Custom Clearances and local transport up to site at Mejillones city.





# Oil & Gas – Compressors by Air



**ORIGIN:** Tarragona – España > Barcelona > Luxemburgo

**DESTINATION:** Antofagasta + Valparaiso -> Mejillones - Chile

**PROJECT TYPE:** Oil & Gas

**SERVICE:** Packaging at site + International AIR transportation

HMGS was hired to design and build the crate for those Compressors and then to coordinate their international transportation, custom clearance at origin, insurance and inland transportation up to final site at Mejillones city – Chile.





# General Cargoes - International Transportation...



**SERVICE: International Multimodal Transportation – AIR – MARITIME – LAND**

The following are just some Clients the have already trusted their **IMPORTS** & **EXPORTS** to Hansa Meyer Shipway Chile



# Hansa Meyer *Shipway*

*Executed Projects in...*

*Argentina...*







# Energy – Wind - Spare parts - **containers**



**ORIGIN:** Buenos Aires port

**DESTINATION:** Puerto Madryn - Argentina

**PROJECT TYPE/NAME:** Energy – “ Achiras ” **48 Mw**

**PROJECT TYPE/NAME:** Energy – “ La Castellana ” **104 Mw**

**SERVICE:** Container reception + Local Transportation up to Site

Shipway was hired to receive + un-stuff + transport containers with additional materials for the projects from Buenos Aires port up to different to sites, Puerto Madryn and Neuquen Provinces

Cargo was un-stuffed at the out of port warehouses, loaded onto trucks and transported to site. For some broken cases Shipway also give packing support. For all shipments Shipway made a struck stock follow up and maintained proper information flow with clients.





# Energy – Wind - Spare parts - **containers**



**ORIGIN:** Buenos Aires port

**DESTINATION:** Puerto Madryn - Argentina

**PROJECT TYPE/NAME:** Energy – “ Vientos Neuquinos ” **100 Mw**

**PROJECT TYPE/NAME:** Energy – “ Bajada Colorada ” **79 Mw**



**SERVICE:** Container reception + Local Transportation up to Site

Shipway was hired to receive + un-stuff + transport containers with additional materials for the projects from Buenos Aires port up to different to sites, Puerto Madryn and Neuquen Provinces

Cargo was un-stuffed at the out of port warehouses, loaded onto trucks and transported to site. For some broken cases Shipway also give packing support. For all shipments Shipway made a struck stock follow up and maintained proper information flow with clients.





# Energy – Wind - Spare parts - **containers**



**ORIGIN:** Buenos Aires port

**DESTINATION:** Puerto Madryn - Argentina

**PROJECT TYPE/NAME:** Energy – “ Chubut Norte I + II ” **55 Mw**

**PROJECT TYPE/NAME:** Energy – “ Pomona ” **113 Mw**



**SERVICE:** Container reception + Local Transportation up to Site

Shipway was hired to receive + un-stuff + transport containers with additional materials for the projects from Buenos Aires port up to different to sites, Puerto Madryn and Neuquen Provinces

Cargo was un-stuffed at the out of port warehouses, loaded onto trucks and transported to site. For some broken cases Shipway also give packing support. For all shipments Shipway made a struck stock follow up and maintained proper information flow with clients.







# Energy Projects ... "ET San Juancito"

## CLIENT :



## ORIGIN:

Santos - Brazil

SIEMENS

## DESTINATION:

Buenos Aires - Argentina

## PROJECT TYPE:

Energy - 2 x TRAFOS 154 tn

## SERVICE:

We were hired to transport 2 x 154 tn transformers from Santos (BR) to E.T. San Juancito in Argentina.

We were hired for the International and Land Transportation up to final site and discharged onto basis.







# Energy Projects ... "ET Buenos Aires"

**CLIENT :** Transener

**ORIGIN:** Korea

**DESTINATION:** Buenos Aires - Argentina

**PROJECT TYPE:** Energy - **3 x TRAFOS 105 tn**

**SERVICE:** We were hired to transport 3 x 105 tn transformers from Korea to Buenos Aires in Argentina. We were hired for the International Transportation, port operation and loading plan.

Transformers were successfully delivered discharged and landed at storage area in Buenos Aires.





# Energy Projects ... "Edesur"

**CLIENT :** EDESUR

**ORIGIN:** Mumbai - India

**DESTINATION:** Buenos Aires - Argentina

**PROJECT TYPE:** Energy - 5 x TRAFOs 80 tn

**SERVICE:** We were hired to transport 5 x 80tn transformers from Mumbai (In) to Buenos Aires in Argentina. We were hired for the International Transportation, port operation and loading plan.

Transformers were successfully delivered discharged and landed at storage area in Buenos Aires.







# Energy Projects ... Hydro Power “Los Caracoles”

Los Caracoles – Turbines Origin Ex-works St. Petersburg (Ru) Destination : San Juan (Arg)



<< Planning >>

<< Weights Calculations >>

<< Road Surveys >>



Maritime transportation

Port Operations

Inland transportation up to Site





# Energy Projects... " Nuclear Power Plant Atucha II



NUCLEOELECTRICA ARGENTINA S.A.

**ORIGIN:** Lima (AR) - Mülheim (Ge)

**DESTINATION:** Lima - (Ar)

**PROJECT TYPE:** Energy - Main Rotor (**180 tn**) - Packaging & Transportation

**SERVICE:** Shipway was hired to design and build the packaging as well as for the International Transportation of the **Main Rotor of the Nuclear Power Plant** Atucha II.

Rotor weights 180 tn, it was transported by land within Argentina, by sea up to Rotterdam, by barge within Europe and then return back in the same way.





# Oil & Gas - Casing... Tubing...



**ORIGIN:** Campana Ar

**DESTINATION:** Ho Chi Min City - Vn

**PROJECT TYPE:** Oil & Gas - Pipes

**SERVICE:** International Multimodal  
Transportation of coated and non coated Pipes.

As break bulk and in containers, un-stuffing and survey services, delivered landed at final client facilities.





# Oil & Gas - Equipment...

## PETROBRAS

**ORIGIN:** Houston - US

**DESTINATION:** Buenos Aires - Ar

**PROJECT TYPE:** Oil & Gas - Compressors

**SERVICE:** International Transportation of Exterrain Compressor and Oil equipment for Petrobras Argentina

The equipment was received at suppliers facilities, transported by trucks to Houston port, loaded onto an Ocean vessel and delivered to clients, landed at Buenos Aires port.







# Oil & Gas - Equipment...

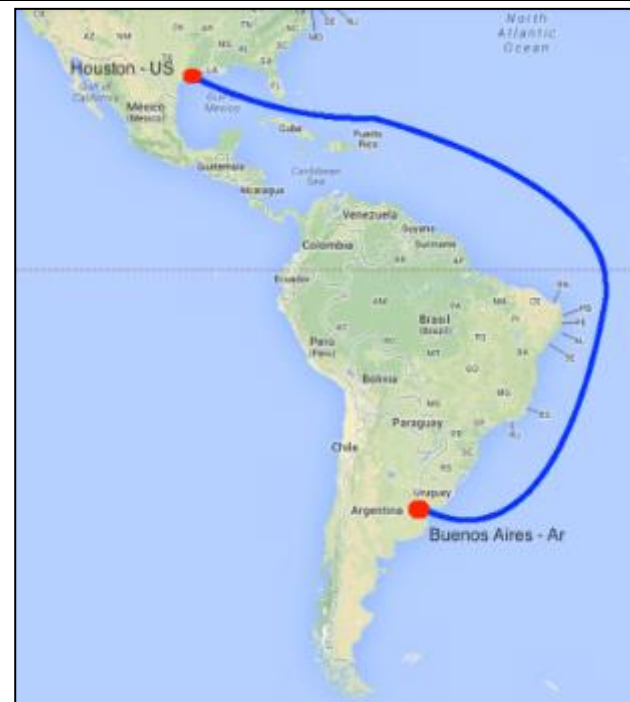


**ORIGIN:** Houston - US

**DESTINATION:** Buenos Aires - Ar

**PROJECT TYPE:** Oil & Gas - Coolers

**SERVICE:** Pre-loading survey, preparation and International Maritime Transportation of 6 Coolers from Houston to Buenos Aires.





# Industrial... ! Cement Plant – “PICO”

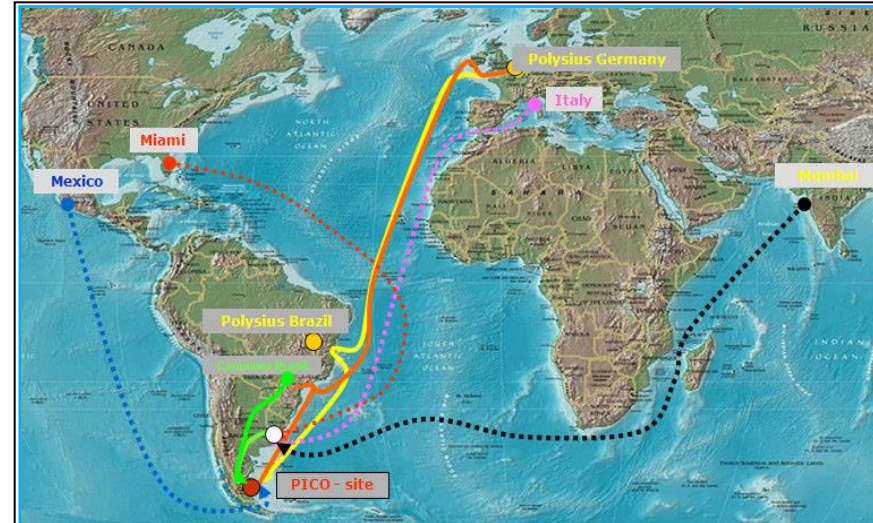


**ORIGIN:** Germany - Brazil - Italy - Mexico - India

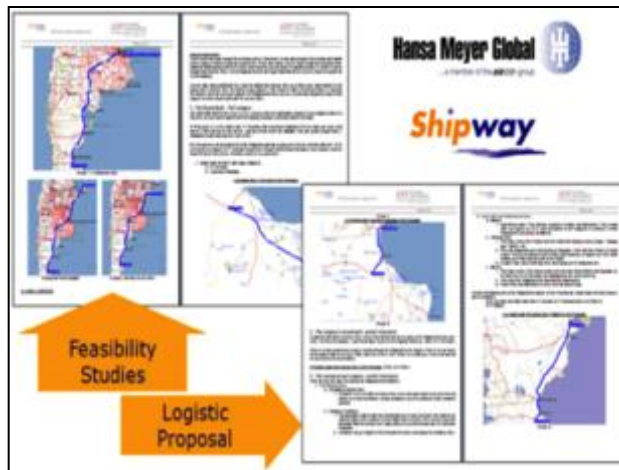
**DESTINATION:** Pt Deseado - Ar

**PROJECT TYPE:** Industrial - Complete Cement Plant

**SERVICE:** Feasibility Study and Logistic Proposal. It was performed the transportation of 13.000 FRT of main components of Client's Cement Plant from origin up to site.



Shipway successfully combined shipments with different origins and different type of pieces.







# Aerospace ... *"Ultra Space Antenna"*



ORIGIN: Genova (It)

DESTINATION: Malargüe - (Ar)

PROJECT TYPE: Equipment – 9800 FRT - Main piece (**165 tn**)

SERVICE: Shipway was hired to design and perform the International and local transportation of the first **ULTRASPACE Antenna** placed in Malargüe (Mendoza – Arg).







# Aerospace ... "ARSAT 1"



**ORIGIN:** Bariloche (Argentina)

**DESTINATION:** Cayenne - (French Guyana)

**PROJECT TYPE:** SATELITE - 35.000 kg of Equipment

**SERVICE:** Shipway was hired to design and perform the Local and International transportation of the first **Geostationary SATELITE built 100% in Argentina** from INVAP facilities at Bariloche City up to Cayenne Airport (F.G).

International Transportation was done with an **Antonov 124** (AN124), first aircraft of this size landed at Bariloche International Airport.





# *Machinery & Equipment*



Locomotive - Dakar (96mt)



Wagons from Spain (64mt)



Bottle cleaner from Chile (60mt)



Locomotive to Iran (98 mt)



Pipe layers to Houston



Transformer to Neuquen - 150 mt

# Hansa Meyer Shipway

*Executed Projects in...*

*Paraguay...*







# Energy Projects ... "ET Ayolas - Paraguay"

## SIEMENS

**ORIGIN:** Santos - Br

**DESTINATION:** Ayolas - Paraguay

**PROJECT TYPE:** Energy - **2 x TRAFOS 254 tn**

**SERVICE:** We were hired to transport 2 x 254 tn transformers from Santos (Br) to Ayolas in Paraguay. A complete road study of 1300 km plus the study of 32 bridges was necessary to be done to design its logistics.

Transformers were successfully delivered discharged onto basis.





# Industrial Projects ... "Oil Production - Paraguay"

**CLIENT:** ALLOCCO - Ar

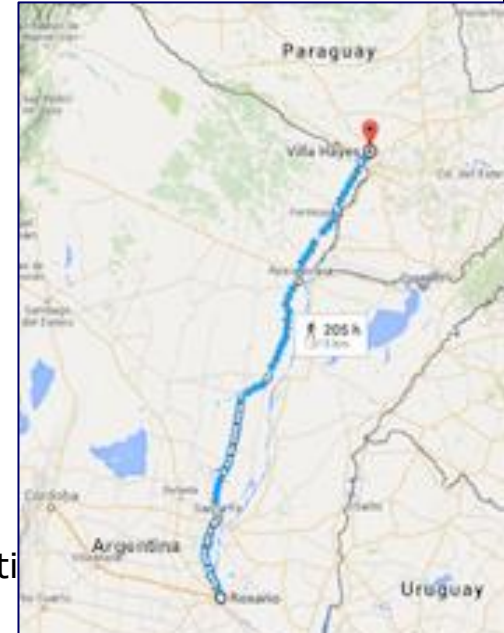
**ORIGIN:** Rosario - Ar

**DESTINATION:** Villa Hayes - Paraguay

**PROJECT TYPE:** Industrial- **1 x ROTATIVO 125 tn**

**SERVICE:** We were hired to transport 1 x 125 tn ROTATIVO from Rosario (Ar) to Villa Hayes in Paraguay. A complete road study of 1100 km plus the study of 17 bridges was necessary to be done to design its logistics.

The Rotoativo was also discharged and mantled onto its basis within final facility



# Hansa Meyer *Shipway*

*Executed Projects in...*

***Bolivia ...***





# Construction - Cement Plant to *Yacuses* - Bolivia...

**CLIENT :**

**ITACAMBA**  
CEMENTO S.A.

**ORIGIN:** Tianjin - China

**DESTINATION:** Arica (Chile) -> Yacuses - Bolivia

**PROJECT TYPE:** Construction - Cement Plant

**SERVICE:** International Land Transport of 12.000 FRT

HMGS was hired to transport 12.000 FRT of this Cement plant from Hook reception at Arica port and land transportation crossing the Andes up to Yacuses at East side of Bolivia.





# Mining Project... "El Mutun"



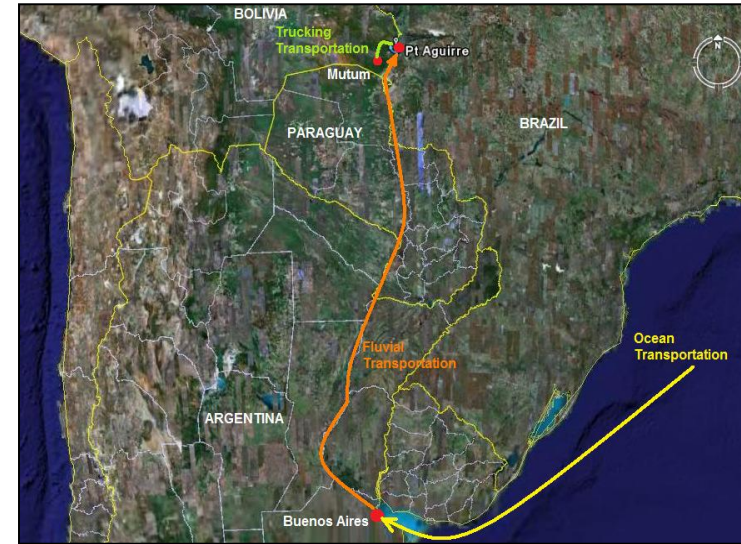
**ORIGIN:** United Kingdom

**DESTINATION:** El Mutun - Bolivia

**PROJECT TYPE:** 8 IRON ORE CRUSHERS

**SERVICE:** We were hired to transport 8 x 40 tn crushers from U.K. to El Mutun mountain in Bolivia. After the sea transportation Crushers were transhiped to barges up to Ptl Quijarro (Bolivia) and after that loaded onto especial trucks to climb by slopes of 15% the mountain.

After arrival we had to prepare the land, creating "natural ramps" to discharge the crushers rolling down







# Oil & Gas ... "Margarita LPG F-II"

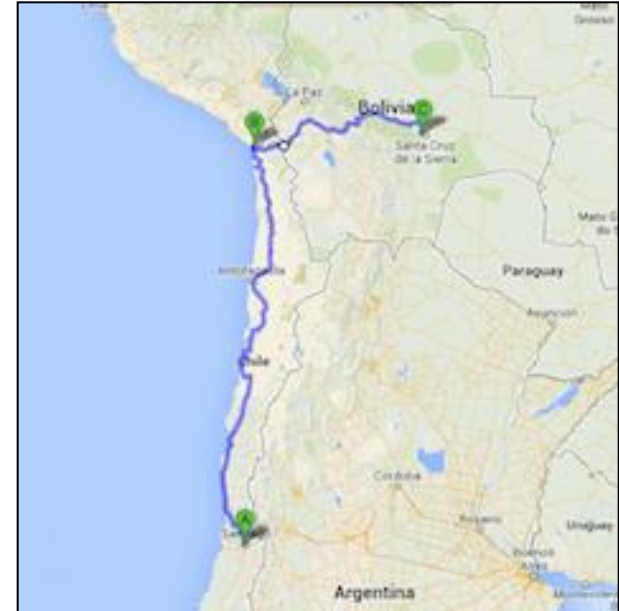


**ORIGIN:** Arica – Santiago de Chile / Tambo Quemado

**DESTINATION:** Santa Cruz de la Sierra - Bolivia

**PROJECT TYPE:** Machinery and General Equipment

**SERVICE:** HMGS provide inland transportation and Custom Clearance coordination, for machinery and general cargoes, crossing by Arica (CL) / Tambo Quemado (BO). The equipment was for the YPFB / TR Bolivia for their project in the LPG Margarita.







**Hansa Meyer Shipway**

...a member of the *Hansa Meyer* - group



***Experienced people in Industrial Projects ...***