

eLearning Platform

2020



Project Cargo Network is an ISO 9001 (Quality Management) and ISO 14001 (Environmental Management) certified organisation established in August 2010 to provide heavy lift and project cargo specialists access to a trusted, worldwide network of agents who can handle their specialist shipments, whilst working professionally and safely under a strict Code of Conduct.

We understand that one of the main challenges in our industry is the lack of training and staff development, especially with new and young staff members. Practical 'on the job' experience needs to be paired with theoretical knowledge, as this leads to a deeper understanding. However, specialist training courses and workshops are often expensive and involve travel and time away from the office. So, we are delighted to offer our own custom-built PCN eLearning Platform, which incorporates a comprehensive 6 module online training program.

The clear and highly effective video based training includes narration, graphs, diagrams, video footage and photographs. When completed, the user will understand the practical, operational and engineering aspects of heavy transport and lifting projects.

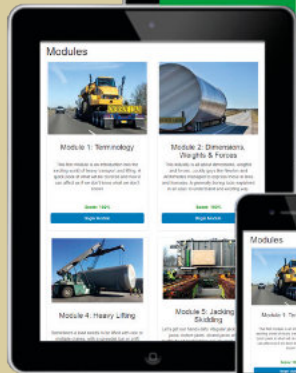
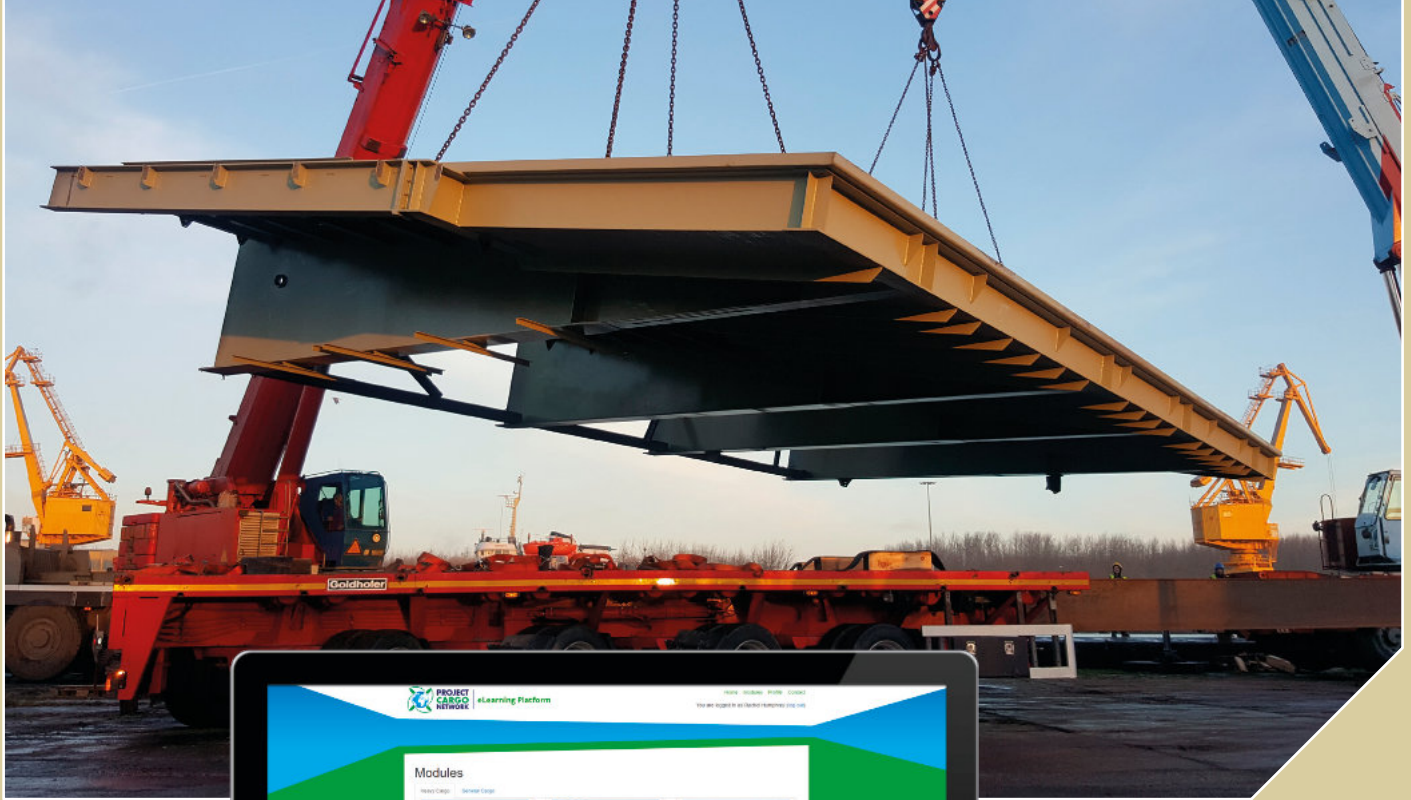
PCN works hard to develop new membership benefits and has invested in both the bespoke training and the eLearning platform so that it can be provided at a heavily reduced rate.

Future plans include more advanced modules.





We are delighted to offer our own custom-built PCN eLearning Platform, which incorporates a comprehensive 6 module online training program.



Our custom built eLearning Platform incorporates a comprehensive 6 module online training program.

Besides the benefits of not having to travel to a training centre and sit in a classroom for long periods, there are additional advantages to eLearning such as being able to stop the training at your convenience and start again when you are ready.

We have taken this a step further by breaking the training into 10 minute sessions which will be long enough to get an important point across but short enough not to disrupt your day.

The training includes 11 multiple choice tests to ensure that each subject has been fully understood before continuing to the next topic.

Each registered user receives a personal log-in so that they can train at their own pace.

The personal profile page contains a progress bar and a list of achievements so you can track your advancement through the course. Upon completion you will receive a Certificate via courier.



Company Wide

The training is ideal for staff who are at the beginning of their career in heavy transport, offering employers a time saving and low cost alternative to workshops and seminars. However, as the training is comprehensive, senior level professionals will also benefit from the practical, scenario and video based course as it will encourage reflection on current practices.



Modules

Here is the schedule of modules and sessions.

Module 1: Terminology

- Session 1** Introduction
- Session 2** Terminology

Module 2: Dimensions, Weights & Forces

- Session 1** Gravity & Forces
- Session 2** Laws of Newton & Archimedes
- Session 3** Principle of Moment
- Session 4** Wind & WaterForce

Module 3: Heavy Transport

- Session 1** Transporters & Trailers
- Session 2** Principle Working (1)
- Session 3** Principle Working (2)
- Session 4** The Stability Area (Plan View)
- Session 5** 3 & 4 Point Suspension
- Session 6** The Equalizing Effect
- Session 7** The Stability Area (Side View)
- Session 8** Pull Type & SPMT Capacities
- Session 9** The Differences Are Getting Smaller
- Session 10** Steering Capabilities
- Session 11** Naming Conventions
- Session 12** The Goose Neck
- Session 13** GroundPressures
- Session 14** Pull Force/TractiveEffort
- Session 15** Hydraulic & Structural Stability (1)
- Session 16** Hydraulic & Structural Stability (2)
- Session 17** Dolly Transport (Turn Tables)
- Session 18** Long Load Vehicles

Module 4: Heavy Lifting

- Session 1** Types Of Cranes
- Session 2** What Is A Crane (Principle Of The Lever)
- Session 3** Principle Of The Hoist
- Session 4** The Load Chart
- Session 5** Types Of Lifts (Keeping The Load Level)
- Session 6** Lifting With 2 Cranes
- Session 7** Tailing Arrangements
- Session 8** The Tailing Frame
- Session 9** Ground Pressures
- Session 10** Load Spreading Options
- Session 11** Rigging Forces (1)
- Session 12** Rigging Forces (2)
- Session 13** Spreader Bars and Lift Beams
- Session 14** A Complex Lift Made Easy
- Session 15** Super Lift Attachments
- Session 16** Stability Of The Load
- Session 17** Erecting Wind Mills
- Session 18** The Lift Plan

Module 5: Jacking & Skidding

- Session 1** Types Of Jacking Skidding Methods
- Session 2** Jack & Pack
- Session 3** Climbing Jacks
- Session 4** Strand Jacks
- Session 5** Strand Jack Applications
- Session 6** What Is Skidding, Skidding Components
- Session 7** Coefficient Of Friction, Different Materials
- Session 8** Hydraulic Skid Shoe
- Session 9** Hilman Rollers
- Session 10** Hydraulic Gantry (1)
- Session 11** Hydraulic Gantry (2)
- Session 12** Airbags

Module 6: Load Outs

- Session 1** Types of Barges
- Session 2** Background History
- Session 3** Terminology
- Session 4** Barge Stability
- Session 5** Hydrostatic Particulars
- Session 6** Tides
- Session 7** 5 Types of Load-Out Operations
- Session 8** **Type 1:** Free Floating Barge, Tidal Conditions
- Session 9** **Type 2:** Free Floating Barge, Non-Tidal Conditions
- Session 10** **Type 3:** Steel Plates, Non-Tidal Conditions
- Session 11** **Type 4:** Barge Fixed Aground
- Session 12** **Type 5:** Beach Landing





PCN C.E.O., Rachel Crawford says: "Our global organisation covers over 100 countries so our affordable and easily accessible training is available to staff in emerging markets. The program enables everyone to compete on an equal footing with the top industry experts when it comes to learning the theoretical side of heavy transport, heavy lift and jacking & skidding."

Pricing

PCN has invested in both the bespoke training and the eLearning platform so that it can be provided at a heavily reduced rate of:

1-2 Participants:	£250 per user
3-5 Participants:	£200 per user
5+ Participants:	£150 per user





**PROJECT
CARGO
NETWORK**

Head Office

Liss Business Centre, Station Road,
Liss, Hampshire, GU33 7AW.
United Kingdom

Tel: + 44 2392 425204

Fax: + 44 2392 356281

headoffice@projectcargonetwork.com

www.projectcargonetwork.com

Registered in the UK. Company No 7334156.
ISO 9001 Reg No 204480; ISO 14001 Reg No 205343